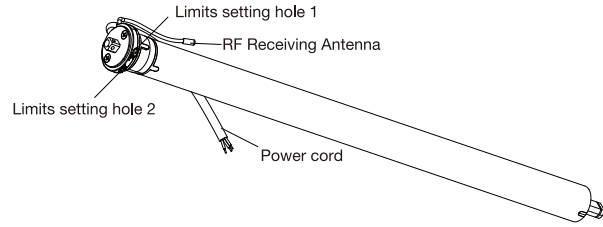


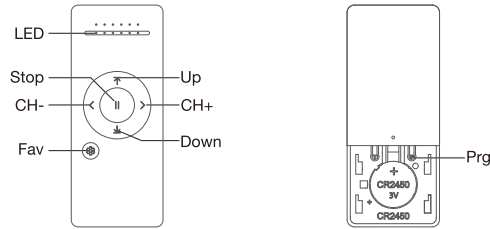
01 Product Info



Working temperature



Remote Controller Buttons

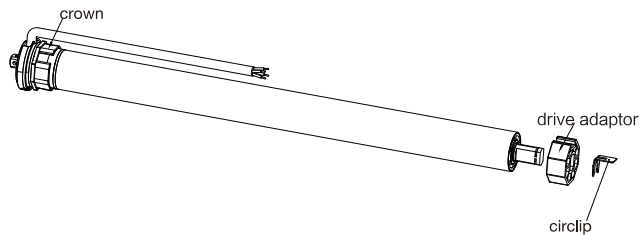


Models & Parameters (more info please refer to the nameplate)

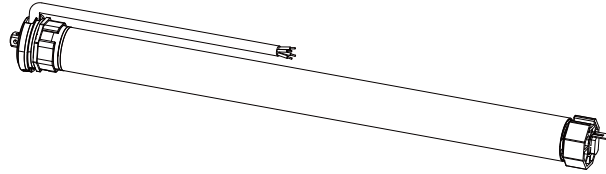
Item	Nominal Voltage	Outside Diameter	Rated Torque	Output Speed	Rated Power
JCA35SR-10017	AC230V 50Hz	35mm	10N.m	17rpm	146W
JCA35SRL-10017	AC110V 60Hz	35mm	10N.m	17rpm	146W
JCA45SR-20015	AC230V 50Hz	45mm	20N.m	15rpm	165W
JCA45SRL-20015	AC110V 60Hz	45mm	20N.m	15rpm	165W

02 Installation

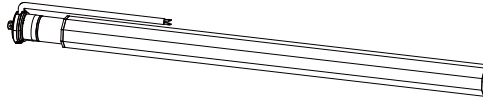
Step 1: Install crown & drive adaptor



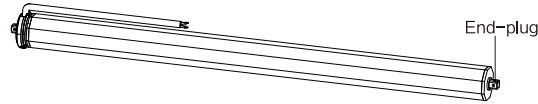
Installation completed as below



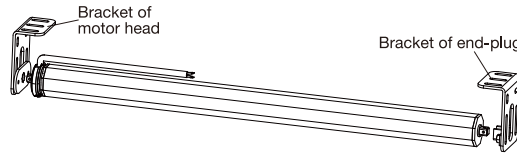
Step 2: Put the motor into drive tube



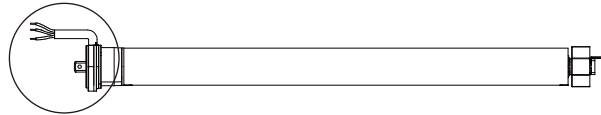
Step 3: Mount end-plug



Step 4: Mount motor in brackets at both ends



03 Power Options



Blue Line: Neutral Wire
Brown Line: Live Wire
Green/Yellow Wire: Earth Wire

White Line: Neutral Wire
Red Line: Live Wire
Green Line: Earth Wire

220V/50Hz

110V/60Hz

04 Caution!

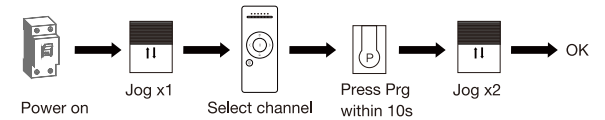


- The power supply is AC supply.
- Please confirm the rated voltage and frequency according to the nameplate when using it.
- The motor will jog in operation, please do not proceed to the next step until it complete.
- During operation, the effective interval of the transmitter button operation is 10 seconds.
If there is no effective transmitter operation for more than 10 seconds,, it will automatically exit the current mode.
- The motor can be paired with max 10 controllers.
- Upper&Lower limits cannot be set at the same, limits saved even power off.
- The motor runs constantly for at 4mins max without any other operation.
- Do not lift the motor by grabbing the wire or antenna.

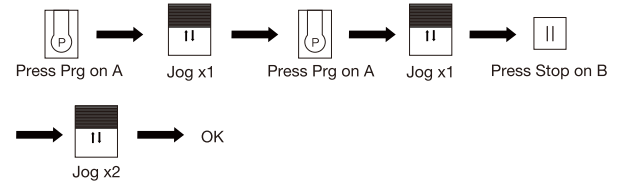
05 Instructions

a. Pairing motor with controller

Way 1: Before adding a new controller



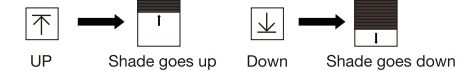
Way 2: Power on, add controller B via pre-existing controller A



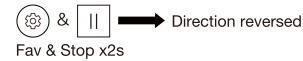
NOTE: Pairing can not be done under group channel or 0 channel.

b. Direction reverse

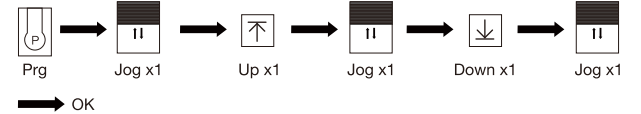
Correct



If the limits are not set, and direction goes opposite.



If limits are set and direction goes opposite.

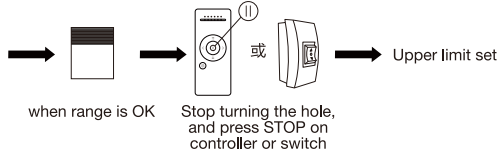
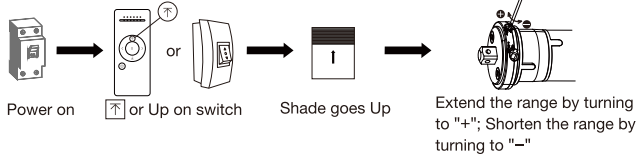


→ OK

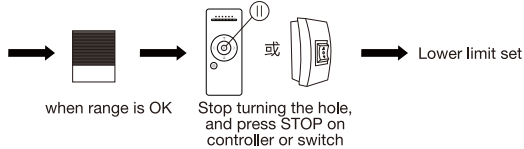
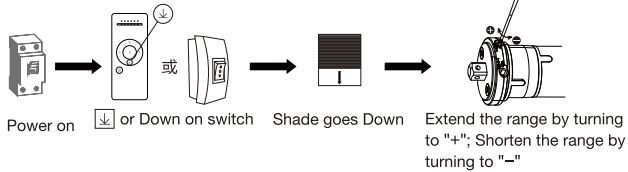
Note: Do reverse the direction when it goes opposite.

c.Upper&lower Limits Setting

1.Upper limit



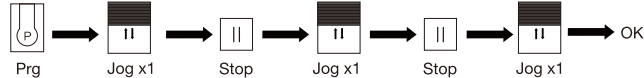
2. Lower limit



Note: Use controller to operate the motor if an external receiver is connected.
If external switch is connected, operate the motor directly by the switch.
When motor is not working, do not turn the hole with adjusting rod.

d.One touch/constant touch mode

Constant-touch ----->One touch

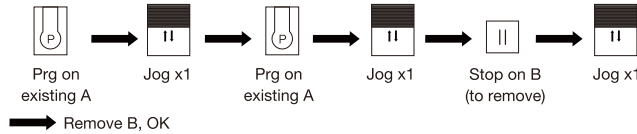


Same operation can toggle from one-touch to constant -touch mode.

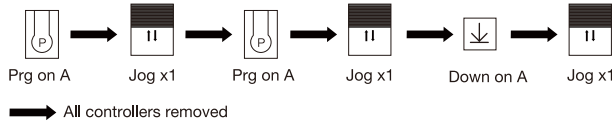
Note: When motor in one-touch mode, hold Up or Down for more than 2s, it will run in constant-touch mode.

e.Removing Controllers

Remove a single controller:



Remove all controllers:



Note: All the settings are saved even controllers removed(limits set are saved)
Controller A/B are already paired to motor

06 Troubleshooting

Fault	Cause	Solution
The motor runs only towards in one direction after powering on	The switch does not open	Turn the crown and driving adaptor in the reverse direction
The motor does not run or start slowly	1.Low voltage 2.Wrong wire connection 3.Overloading 4.Wrong installation	1.Adjust the voltage into the rated voltage 2.Correct the wire connection 3.Put the suitable weight for roller shade 4.Reinstall the tubular motor
The motor suddenly stop	More than the rated working time (4 minutes)	After 20mins later, the motor will back to normal
The motor makes a strange noise when it runs	The driving tube is too long	The driving tube can be shortened if the idler can be moved.

Manual Instruction for AC Tubular Motor with Mechanical Limits & RF receiver



Headquarter: Xinchang

ADD : No. 2 Laisheng Road, Provincial High-tech industrial Park, Xinchang county,Zhejiang Province

EMAIL : jc35@jiecang.com

TEL : +86-575-86297980

FAX : +86-575-86297960